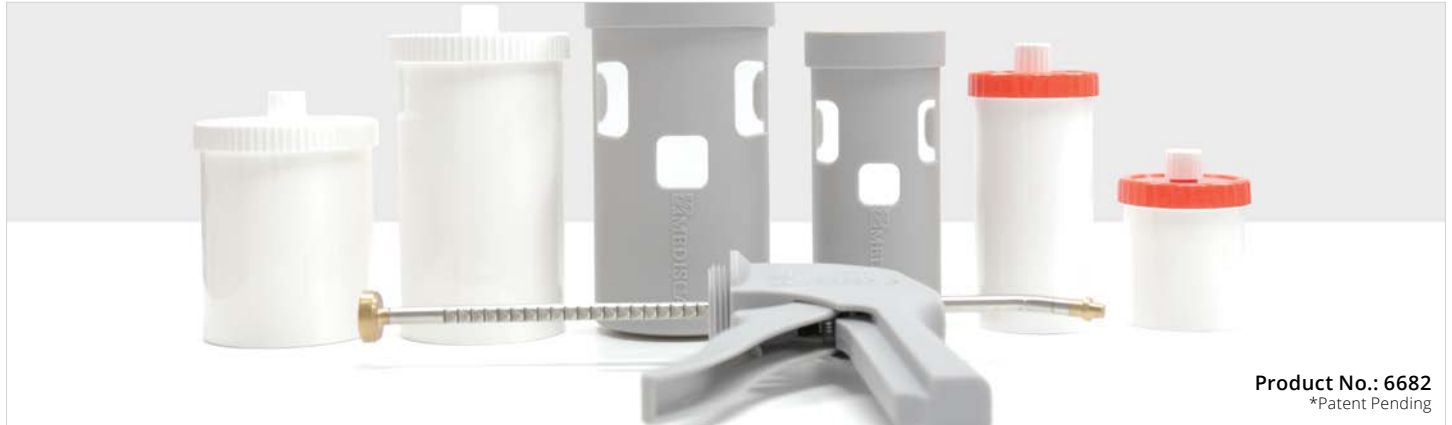


EAZY-Fill: Topical Transfer Gun



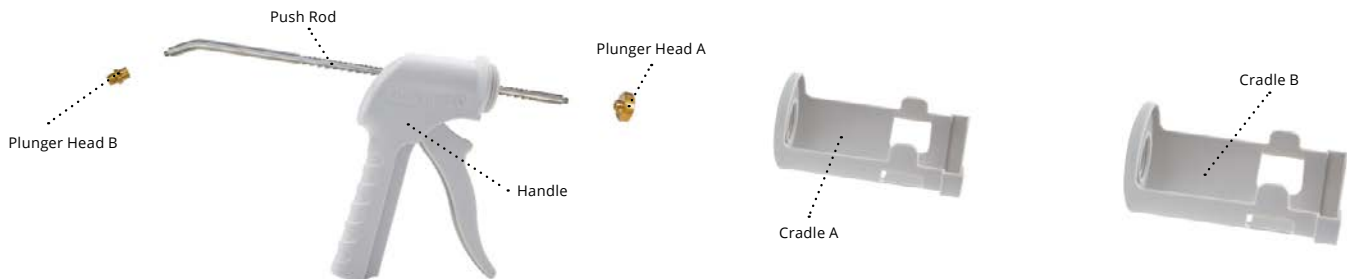
Product No.: 6682
*Patent Pending

Metered, Lightweight and Compact



Presenting a new and convenient way of transferring compounds from Electronic Mortar and Pestle (EMP) Jars: The EAZY-Fill Topical Transfer Gun. Before now, there was no way of knowing how much of a compound was being transferred. The EAZY-Fill introduces transferring with 2 metered modes, plus a free mode, which enables you to control the output into a dispensing device. This lightweight and ergonomic device requires minimal counter space and works perfectly in unison with your electronic balance.

Features and Benefits

- Controlled metered transferring
- Portable, convenient and lightweight
- Compatible with different sized EMP jars: 100 mL - 500 mL
- Minimal actuation force
- Transfer compounds directly from EMP jars to dispensers and containers
- Interchangeable, multi-cradle system
- Ergonomic with 360° orientation
- RSD < 10% and RE ± 10%*



Modes and Calibrations*

MODE	ROD POSITION	CRADLE A (100 ML & 200 ML EMP JARS)	CRADLE B (300 ML & 500 ML EMP JARS)
MODE 1		10 mL / click	20 mL / click
MODE 2		15 mL / click	30 mL / click
FULL STROKE (MODE 1 & 2)		30 mL	60 mL

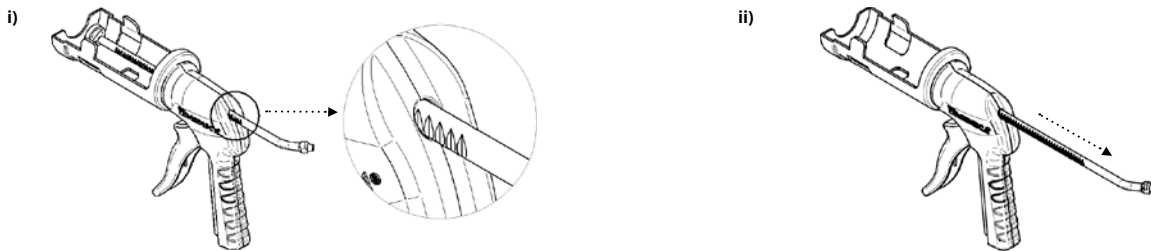
*As calibrated with MEDISCA HRT Cream Base.

Assembly and Use

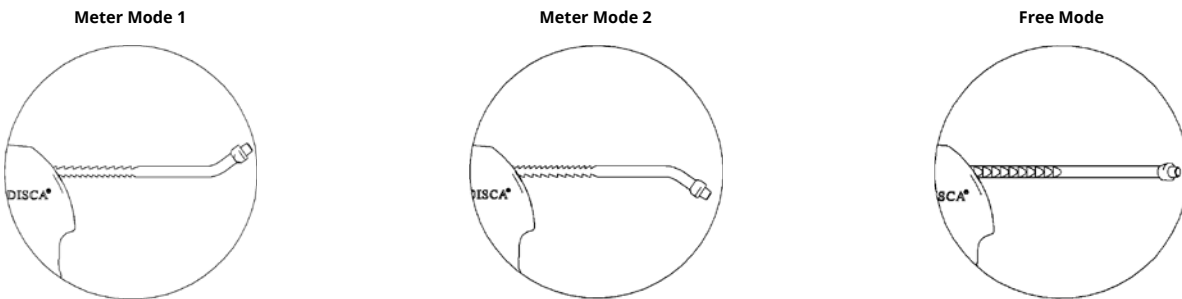
Step 1: Install desired plunger head onto front of push rod and store other plunger head on back of push rod. Rotate desired cradle clockwise onto handle.



Step 2: Orient smooth surface upwards and retract push rod.



Step 3: Turn push rod in 90° increments to select desired metered mode (mode 1, mode 2 or free mode).



Step 4: Insert appropriate sized EMP jar into cradle, remove EMP cap, and actuate trigger to begin topical transfer.

