

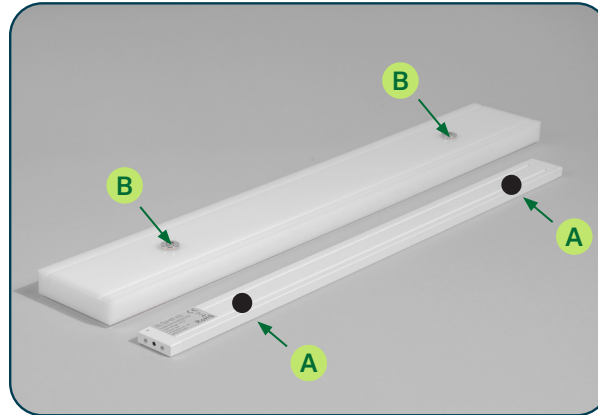
RocketMolds™ suppository holder

Assembly instructions



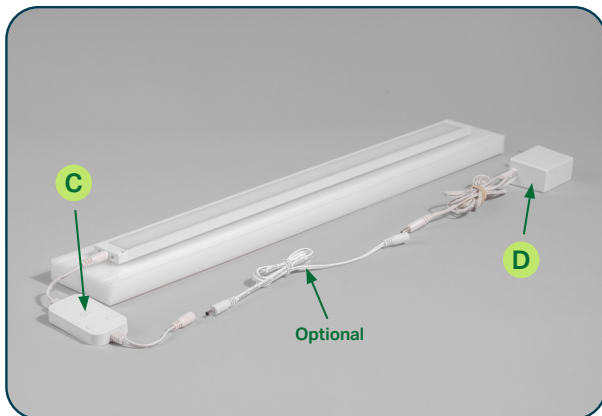
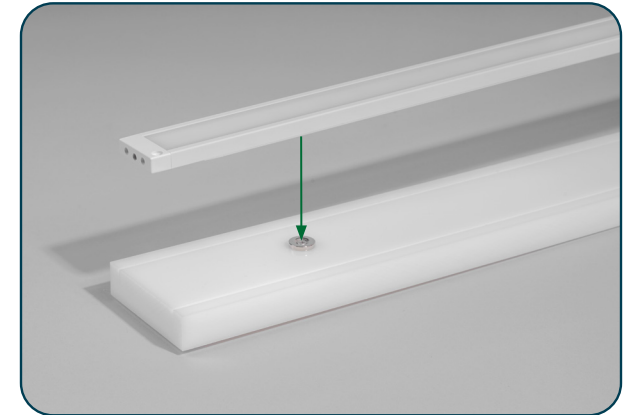
Step 1

Locate LED light and place on a flat surface, bottom side up.



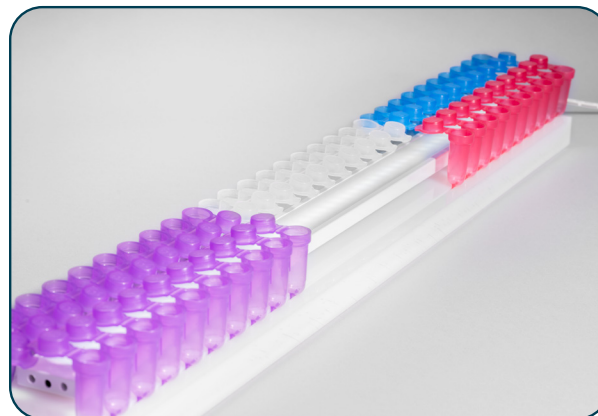
Step 2

Peel off adhesive backing and affix both metal disks (A) to the bottom side of the LED light strip at the same distance apart as the magnets (B) on the white strip holder.



Step 3

Plug dimmer switch (C) into LED light and plug power cord (D) into dimmer switch (D). An optional extra plug extension is provided for increased distance from the power source.



Step 4

Attach LED light to white strip holder magnets. Insert plug into power source to power on the LED light strip.



For more information

USA 1-800-932-1039 [medisca.com](https://www.medisca.com)

CAN 1-800-665-6334 [medisca.ca](https://www.medisca.ca)

AUS 1300 786 392 [medisca.com.au](https://www.medisca.com.au)