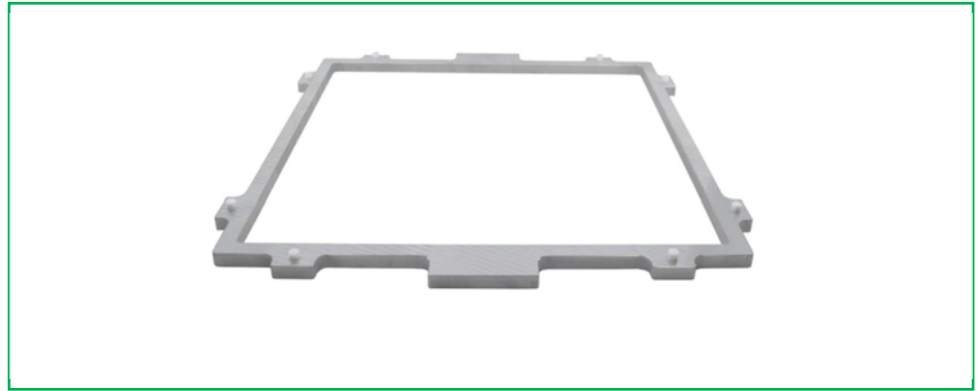




**MEDISCA**<sup>®</sup>  
YOUR TRUSTED PARTNER IN COMPOUNDING

**PRODUCT NO.: 5625**



## Powder Dam, Medi X-TABB

**Description:** The Powder Dam is specifically designed for easy manipulation of powders when compounding Rapid Dissolve Tablets by using Medi X-TABB System. It can be simply aligned with Cavity Plate between the guides and set it on the Cavity Plate. There are no snaps, clamps or extra fixtures required and to remove, simply lift it off.

### FEATURES:

- Reduce time spent on the powder spreading process
- Made of durable and lightweight high-grade aluminum with scratch resistant and consist of 2 Teflon alignment pegs on each sides
- Easy-to-use and easy-to-clean surface

### TECHNICAL SPECIFICATIONS:

Dimensions (inches) (Approx.)	13 x 13
Material	High Grade Aluminum
Thickness (inches)	0.375

### Additional Information

- Used with Cavity Plate w/out Overflow (5628)
- Sold separately. Not included with Medi X-TABB Mold (RDT System) (Code: 5650)

USA | CANADA | AUSTRALIA PACIFIC | EUROPE

[WWW.MEDISCA.COM](http://WWW.MEDISCA.COM)